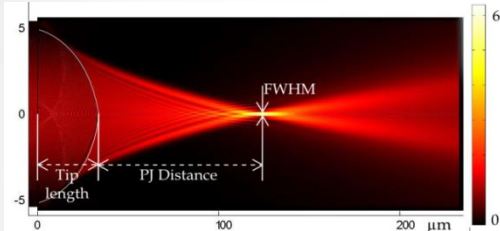
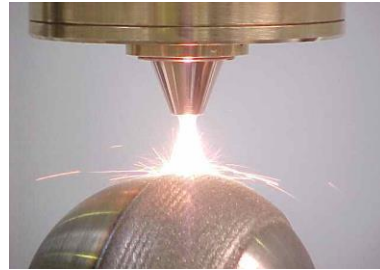


Contact : manuel.flury@insa-strasbourg.fr

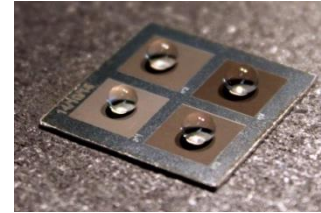
## 1. Laser microprocessing



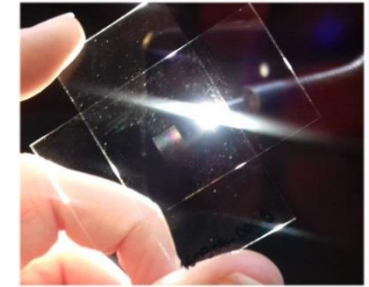
Photonic jet using shaped tip fibres for etching



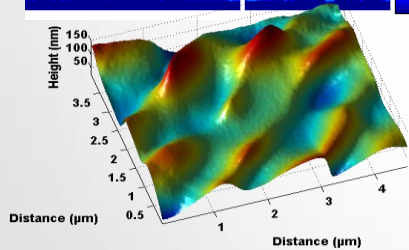
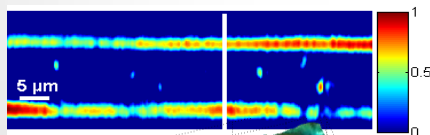
Additive manufacturing



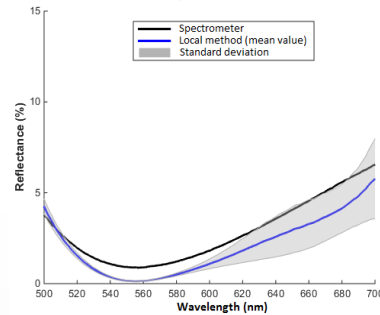
Femtosecond laser texturing and welding



## 2. Multi-modal nanoscopy

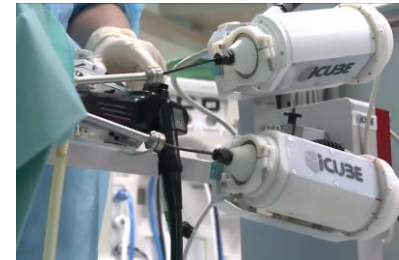


3D super-resolved nanometrology



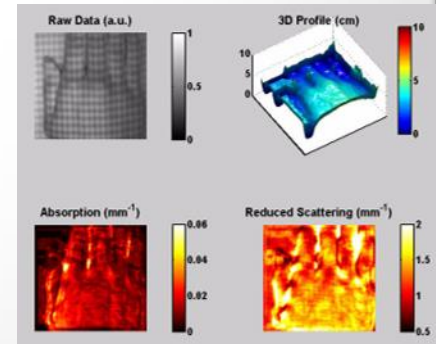
Local spectroscopy (1 μm spot)

## 3. Photonics instrumentation for healthcare



Endoscopic OCT

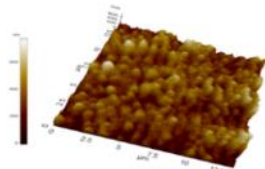
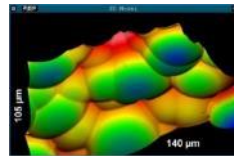
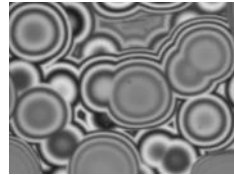
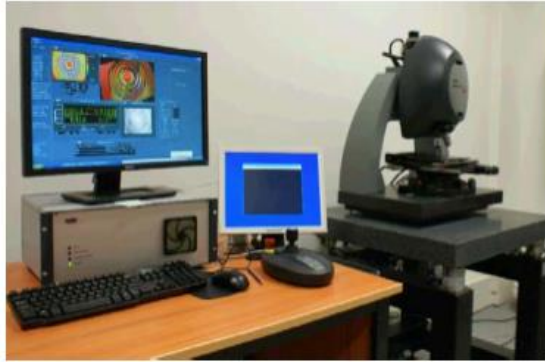
### Diffuse Imaging



# Technical platform at IPP

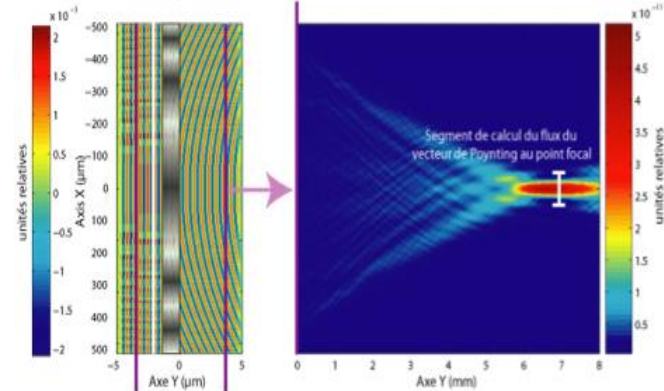
## Microscopies in C3-FAB

- 5 optical profilometers 3D
- AFM for nano-metrology



## Photonics CAD

- Rigorous electromagnetic methods
- Ray-tracing (Code V, Zeemax)



FEM  
FDTD  
RSM  
MIE  
FMM

## Healthcare in IRIS

- Inside the Strasbourg Hospital
- Clinic translation



## Laser (partner of ICube) IREPA LASER INSTITUT CARNOT MICA

- High power lasers ressource center

